

Copet

Copet©2003-2006 Seijoro Kubo / butterfly.stroke inc. All Rights Reserved.

Downloadable Paperkit No.2 BEAR
ダウンロード式ペーパーキット No.4 くま

くまの作り方

HOW TO
MAKE BEAR

1 まず、薄い紙で全体を裏打ちします。



はじめに体を作ります。
折りぐせをつけたら胴体を

のり付けしたあとに顔を組み立て、
貼りつけます。耳を差込んだら
上を閉めます。(下は開けたままで。)

First, affix each cut-out part on paper that is the same thickness as poster paper.
Begin with the body.

Fold paper upward and downward as indicated.
Glue the tabs as shown to form the torso.

Make the face, and glue it to the body.
Insert the ears into the slits on the head, and close the head flap.(Keep the bottom flap open.)

2 体を作ります。折りぐせをつけたら背中に両脇をのり付けし、



体を作ります。折りぐせをつけたら背中に両脇をのり付けし、腹を差込み

ます。(足は折り込んでおきます。)
顔は折りぐせをつけてのり付けし、
組み立てて差込みます。

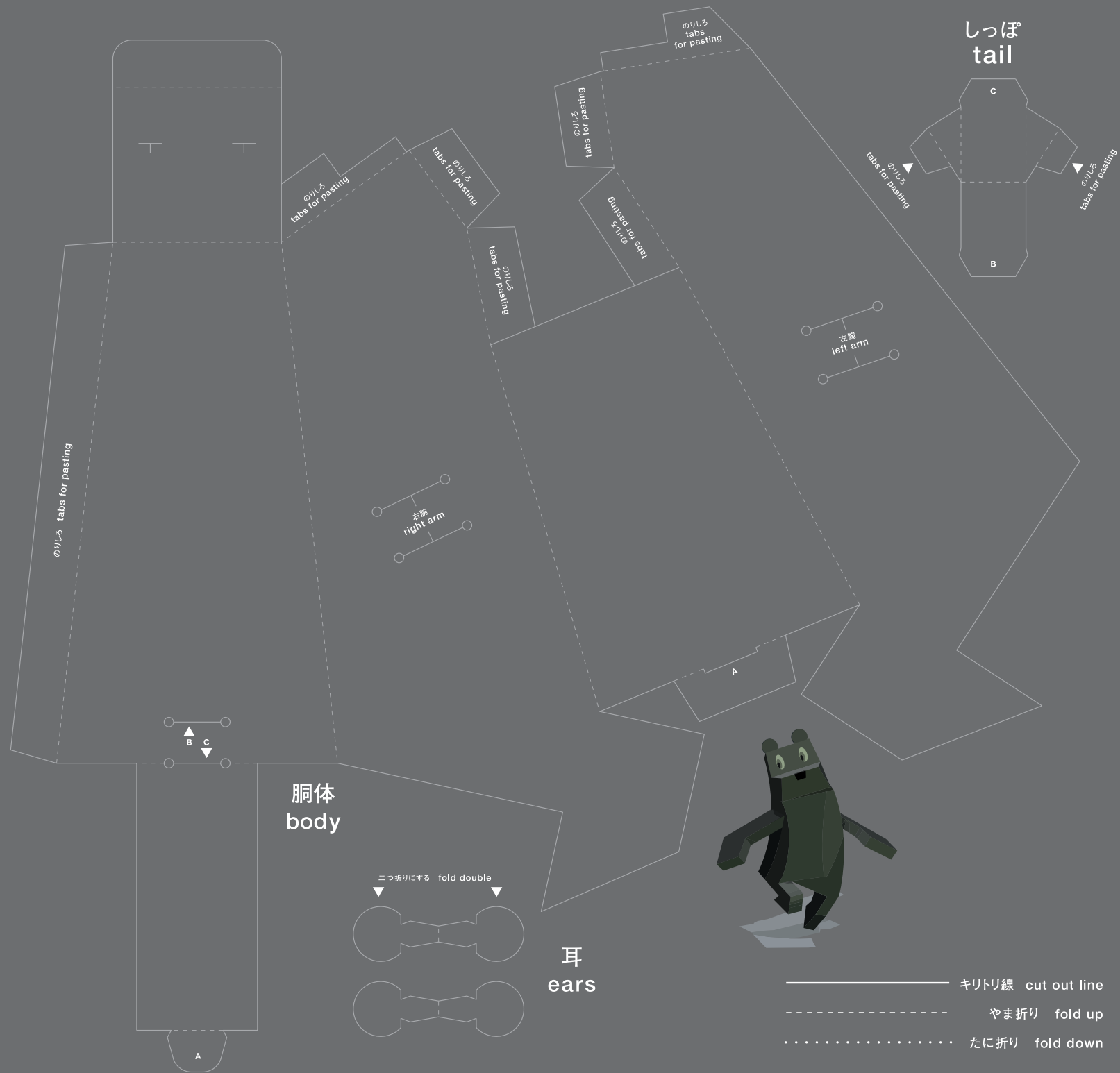
Begin with the body. Fold paper upward and downward as indicated, and put the both sides of the body and the back together, and insert the stomach into it. (legs are fold beforehand)
Fold the face as indicated, glue and paste, paste it to the body.

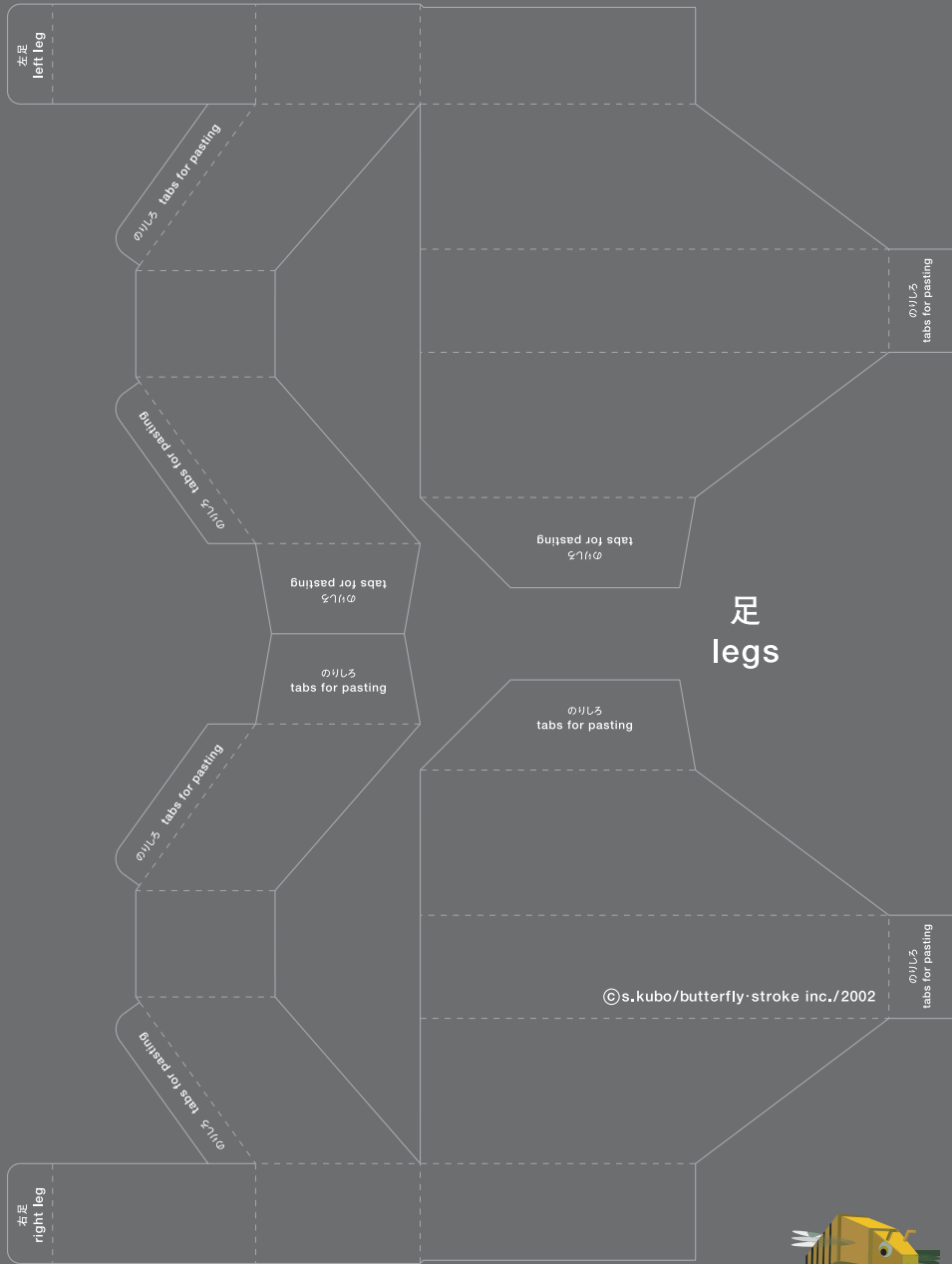
3 手を作ります。折りぐせをつけてのり付けし組み立てたら、胴体横に差込みます。



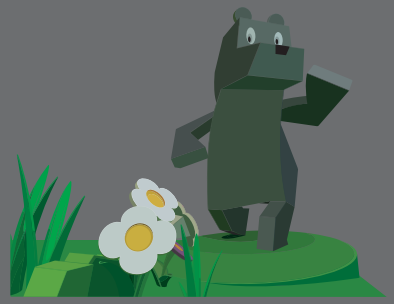
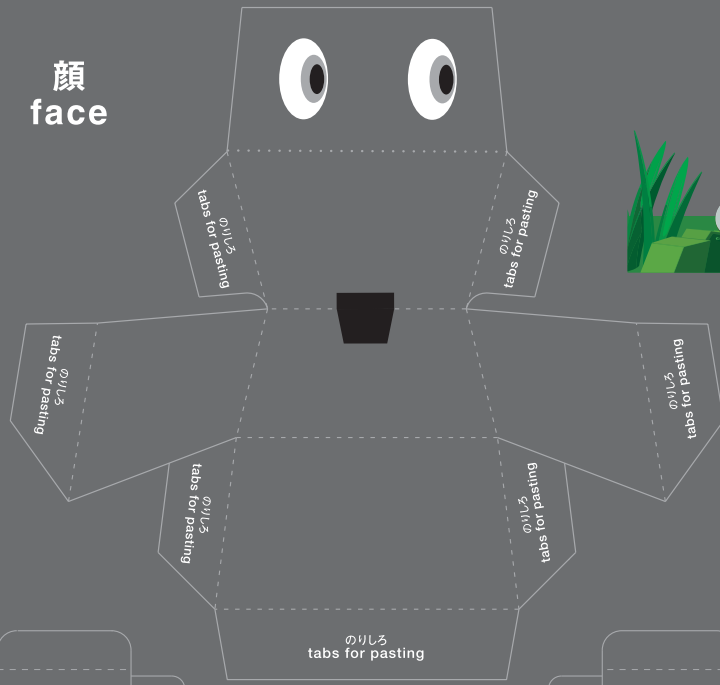
耳としっぽを折り、差込んだら完成です。

Next are the arms. Fold them as indicated, glue and make shape. Insert them into the side of the body. Lastly, fold the ears and the tail, and insert them into the slit.

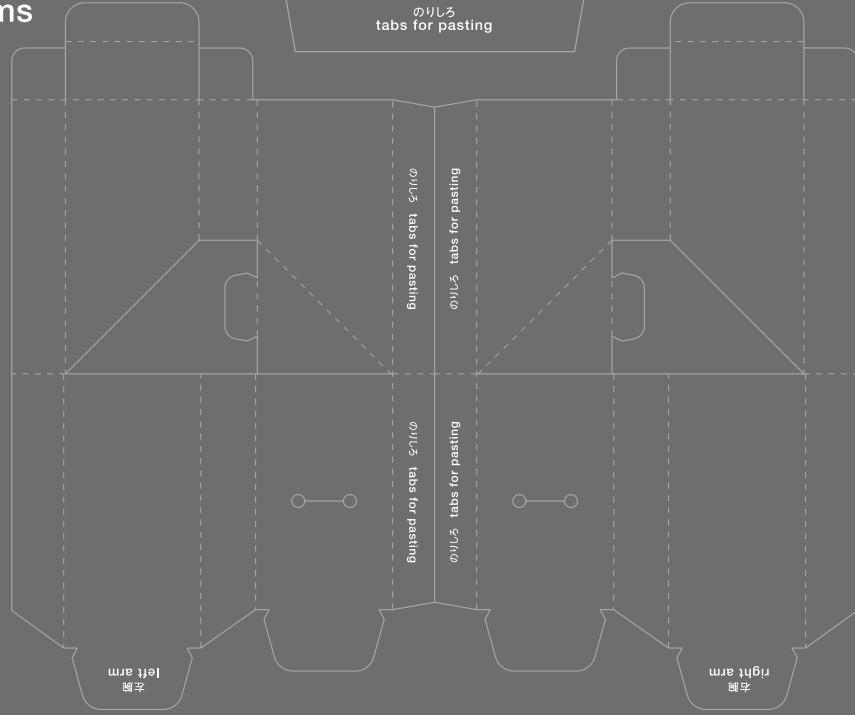




顔
face



腕
arms



- キリトリ線 cut out line
- - - - - やま折り fold up
- たに折り fold down